

BASELINE SECURITY PRODUCT ASSESSMENT



Secura is officially recognized as a licensed laboratory to perform evaluations within the Baseline Security Product Assessment (BSPA) program of the National Communications Security Agency (NLNCSA). As a licensed lab for BSPA, Secura is your partner through the whole BSPA process.

IN CONTROL WITH SECURA

Secura has worked in information security and privacy for nearly two decades. This is why we uniquely understand the challenges that you face like no one else and would be delighted to help you address your information security matters efficiently and thoroughly. We work in the areas of people, processes and technology. For our customers we offer a range of security testing services varying in depth and scope.

WHAT IS A BASELINE SECURITY PRODUCT ASSESSMENT?

The Baseline Security Product Assessment (BSPA) is an assessment scheme managed by the Netherlands National Communications Security Agency (NLCSA) aka Nationaal Bureau voor Verbindingsbeveiliging (NBV), a cyber-defense business unit of the Dutch intelligence and Security Service (AIVD). The BSPA scheme provides a framework where products can undergo a basic security assessment within limited time and with limited costs. The scheme is a response to the growing demand for secure commercial products that adhere to the Baseline Informatiebeveiliging Rijksdienst (BIR: 2017 up to BBN2) that governmental organizations have to comply with.

This Dutch BSPA scheme is inspired by a similar French scheme, managed by the ANSSI organization, called "Certification de Sécurité de Premier Niveau". Since its launch in 2008 more than 90 products have been certified under this French SCPN scheme. The BSPA scheme aspires to



become similarly successful. Just like the French CSPN scheme, the Dutch BSPA scheme focuses on hardware and software security products for the sensitive, but unclassified, domain.

BSPA follows a clear structured and phased approach according to the BSPA requirements. An evaluation performed under the BSPA scheme has the following main characteristics:

- Identification of the specific product and its versions;
- It is carried out in a constrained time frame and with limited resources with a maximum of 25 man-days;
- It determines the conformity of the product with its Security Evaluation Target, and
- It determines the effectiveness of the security features offered by the product.

To save time the BSPA assessment process does not need any disclosure or cooperation from the developer or vendor of the product. The only requirements are an installed, working product and the accompanying documentation.

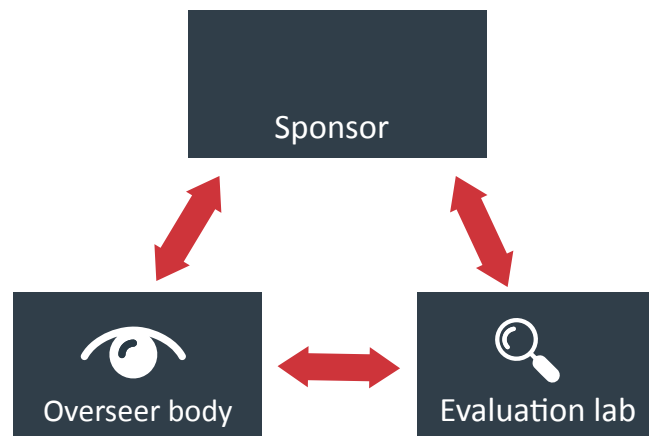
Secura is licensed by the AIVD to provide BSPA services and can help you throughout the whole process of the BSPA evaluation, starting from a preparatory stage, continuing with the testing itself and of course supporting the full BSPA process.

Depending on the readiness for this assessment, Secura can also deliver BSPA as a pre-validation to prepare for the official BSPA.

ROLES AND RESPONSIBILITIES

- **Sponsor:** A sponsor is a party that has an interest in the assessment of a product. This sponsor applies for the BSPA at the Overseer Body and pays for the evaluation by the Evaluation Laboratory. Usually, this is a vendor or governmental organization.
- **Evaluation Laboratory:** Laboratories test the project against defined security specifications in a limited timeframe. The available laboratories are licensed for the BSPA process, and have the expertise necessary to evaluate the product in question

- **Overseer body:** This party oversees the BSPA process and is responsible for reviewing and publishing the Statement of Conformity and Deployment Advisory. The Overseer body for the BSPA scheme is AIVD/ NLNCSA.
- Optionally, observers who are interested in the evaluation, or developers of the product in question can be involved in the process.



THE EVALUATION PROCESS

Before the actual evaluation starts, a Security Evaluation Target (SET) is produced to align the expectations between Sponsor, Evaluation Laboratory and Overseer Body. This SET includes the security features to be tested and the conditions under which the test is performed, more specifically:

- Identification of the specific product and its versions;
- The intended usage of the product, including by whom and in what situation the product is supposed to be used;
- The intended environment where the product will be used (a description of the technical and non-technical assumptions on the environment);
- The security problem, addressed by the product (assets to be protected, and threats to be countered);
- The security features to be tested (features that counter the relevant threats).

The description of the security features is especially important for the product assessment, because these will be tested explicitly.

Once all parties agree on the SET, the assessment will start. There are three main goals of the evaluation performed by the Evaluation Laboratory.

- The first one is to evaluate whether the product adheres to the security specification in the SET;
- Secondly, whether the security features of the product are effective, and protect against attackers with low and medium attack potential;
- Finally, it is important to evaluate whether the product has no negative impact on its host system infrastructure.

Secura takes care of collecting the required documentation and perform document analysis as well as penetration testing on the product. Examples of testing required on the product include protection of cryptographic keys, known vulnerabilities impact, user authentication and authorization, ports and interfaces access or insecure configurations. The BSPA process follows a 10 steps structure:

1. Security Evaluation Target analysis
2. Product installation
3. Compliance analysis

4. Compliance analysis by source code review
5. Compliance analysis by product testing
6. Determination of the resistance against attacks
7. Vulnerability analysis
8. Usability analysis
9. Evaluation of cryptography
10. Reporting

THE BSPA DELIVERABLES

Secura generates the **Evaluation Technical Report (ETR)**, including the evaluation results and conclusions. Together with the ETR, we produce a draft of the **Deployment Advisory (DA)** for the users, which the overseer body will review. Based on these documents, we support the approval process with the overseer body, leading in the end to the Deployment Advisory (DA) for your product. The recommendations in this DA for the users is the primary benefit of the BSPA. The DA includes a **Statement of Conformity** to the SET.

Based on these documents, the overseer body will investigate the results of the evaluation, and finally issue

BSPA Categories

BSP assessments can be used for a wide variety of software and hardware:

Product category	Examples
Network security	VPN, link encryptor, WiFi access point, etc.
Network filtering, detection and response	IDS, firewall, SSL proxy, etc.
Secure messaging	Secure mail, secure chat-app, secure voice-call-app etc.
Media and file security	Full disk encryption, container encryption, file encryption, data erasure, etc.
Identity and access management	Password manager, key-management and distribution, two-factor authentication, access control and federation, etc.
Secure OS execution environment	Secure-OS, secure-hypervisor, micro-kernel, separation kernel, etc.
Hardware and embedded software	HW-based encryption, HW-based secure-boot, USB device, keyboard (KVM-) switch, smart-meter, tamper resistant device, etc.
Smart cards and similar devices	Secure ICs, JavaCards, transportation/access cards, etc.

the Statement of Conformity for your product. Statement of Conformity gives a clear indication about the security features compared to the SET and that the evaluated product and complies to the BIR 2017 (Baseline Informatiebeveiliging Rijksdienst) up to BBN2. This could lead to considerable market advantage, especially in case of targeting the Dutch market.

IN CONTROL WITH SECURA

Secura has worked in information security and privacy for over 15 years. By leveraging our experience and expertise, we are a strong partner to address your information security matters efficiently and thoroughly. As a licensed lab for BSPA, Secura is your partner through the whole BSPA process. Step by step, we can:

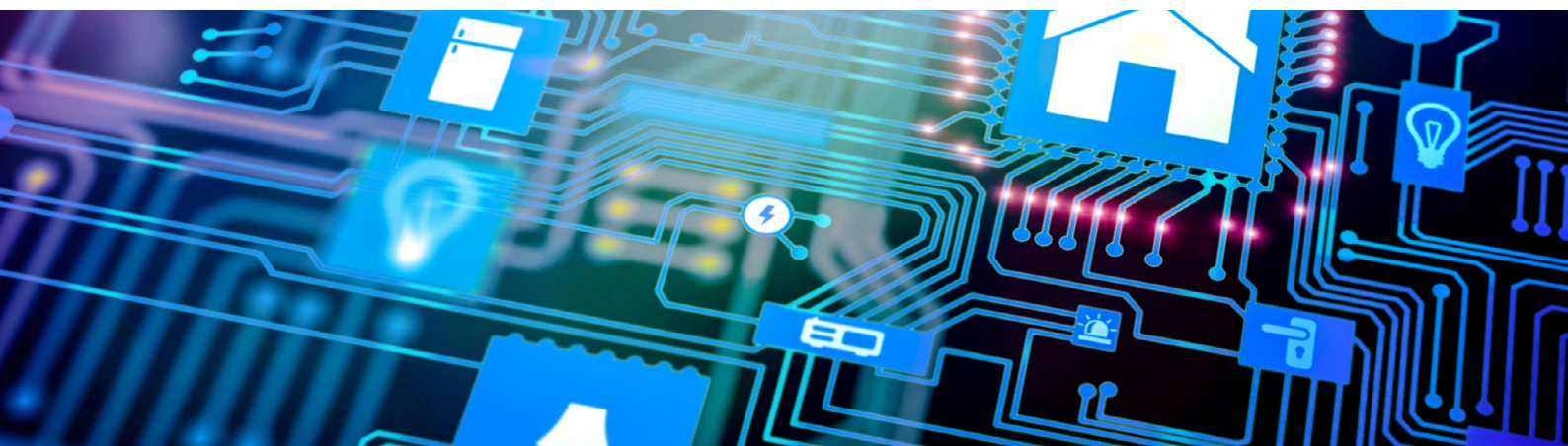
- Guide you through the preparation of required documentation;
- Perform the required document review and testing on the evaluation product;
- Deliver a pre-validation if required;
- Execute the formal BSPA process.

By partnering with Secura for your BSPA evaluation, you have the guarantee of obtaining support during the whole process.

The BSPA Statement of Conformity for your product is a demonstration of its security capabilities. Obtaining the Statement of Conformity could lead to a considerable market advantage for manufacturers, especially in case of targeting the Dutch market. For government agencies, this Statement of Conformity gives a clear indication about the evaluated security features compared to the SET and that the evaluated product complies to the BIR (Baseline Informatiebeveiliging Rijksdienst) up to BBN2. The success of a BSPA assessment can only be found when a sponsor follows up on the outcome of the Deployment Advisory (based on the Security Evaluation Target). In this way BSPA contributes strongly to improving security of IT products.

Moreover, due to the nature of the BSPA requirements and process, this evaluation can be used as a stepping-stone for other more extensive certifications, against internationally recognized schemes such as Common Criteria.

Secura also provides BSPA pre-validation in order to assess your product on readiness for official BSPA process.



INTERESTED?

Would you like to learn more about our services?
Please do not hesitate to contact us.

Vestdijk 59
5611 CA Eindhoven
Netherlands

Karspeldreef 8
1101 CJ Amsterdam
Netherlands

Follow us on   

T +31 (0)40 23 77 990
E info@secura.com
W www.secura.com